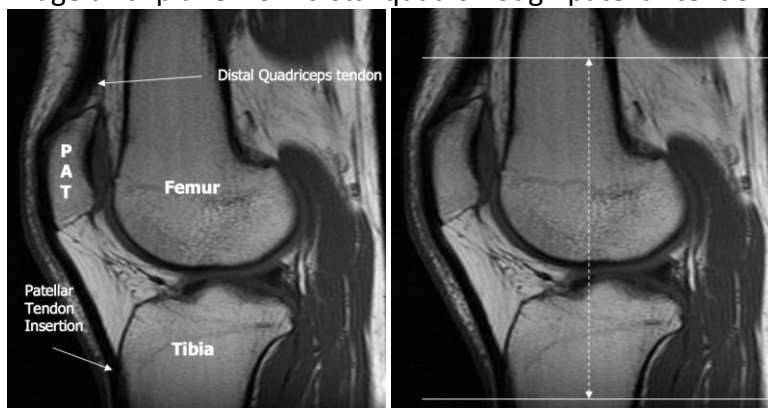


Thigh

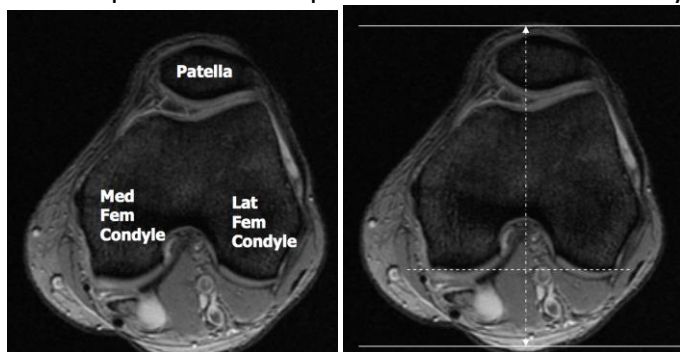
Coronal T1; FOV 40, 4/1
Coronal PDFS; FOV 40, 4/1
Axial T1; FOV 22-26, 4/1
Axial T2FS; FOV 22-26, 4/1
Sagittal STIR; FOV 22-26, 4/1

Knee

Sagittal PDFS; FOV 14-16, 3/0.5
Sagittal PD; FOV 14-16, 3/0.5
Coronal PDFS; FOV 16-18, 3/0.5
Coronal PD; FOV 16-18, 3/0.5
Axial PDFS; FOV 14-16, 3/0.5
Image axial plane from distal quad through patellar tendon insertion



Coronal plane with line parallel to the femoral condyles, image entire knee



Sagittal plane perpendicular to coronal © through entire knee – should NOT see fibula or medial condyle on the last image.

